

USAF Almanac

Major Commands

A major command is a subdivision of the Air Force assigned a major part of the Air Force mission and directly subordinate to Hq. USAF. In general, there are two types of major commands: operational and support.

Air Combat Command

Headquarters Langley AFB, Va.

Established June 1, 1992

Commander Gen. John P. Jumper

MISSIONS

Operate USAF bombers (active and ANG and AFRC gained); USAF's CONUS-based (active and gained) fighter and attack, reconnaissance, rescue, battle management, and command-and-control aircraft
Organize, train, equip, and maintain combat-ready forces for rapid deployment and employment to meet the challenges of peacetime air sovereignty, wartime defense, and military operations other than war
Provide air combat forces to America's warfighting commands (Central, European, Joint Forces, Pacific, and Southern); nuclear forces to STRATCOM; air defense forces to NORAD

COROLLARY MISSIONS

Monitor and intercept illegal drug traffic
Test new combat equipment

FORCE STRUCTURE

Three Numbered Air Forces: **8th**, Barksdale AFB, La.; **9th**, Shaw AFB, S.C.; **12th**, Davis-Monthan AFB, Ariz.
Two Direct Reporting Units: Aerospace C², Intelligence, Surveillance, and Reconnaissance Center and Aerospace Expeditionary Force Center, Langley AFB, Va.
Two primary subordinate units: Air Warfare Center, Nellis AFB, Nev.; Air Intelligence Agency, Kelly AFB, Tex.
25 wings

OPERATIONAL ACTIVITY

Flying hours: 29,200 per month

Major operations

Allied Force (Yugoslavia), Southern/Northern Watch (Iraq)

Major training exercises

Air Warrior, Red Flag (Nellis AFB, Nev.); Air Warrior II (Barksdale AFB, La.); Amalgam Warrior (NORAD); Baltops, TFW (EUCOM); Blue Advance, Fuertas Defensas, New Horizons (SOUTHCOM); Blue Flag (Hurlburt Field, Fla.); Bright Star, Initial Link, Internal Look (CENTCOM); Cooperative Zenith, JTTEX, Linked Seas, Northern Viking, Roving Sands, Strong Resolve

(JFCOM); Global Guardian (STRATCOM); Maple Flag (Canada); Rugged Arch (CENTAF)

PERSONNEL

(as of Sept. 30, 2000)

Active duty	84,473
Officers	12,319
Enlisted	72,154
Reserve components	57,935
ANG	47,024
AFRC	10,911
Civilian	10,075
Total	152,483



A B-2 from Whiteman AFB, Mo., makes contact with the boom of a KC-10 from McGuire AFB, N.J., during a joint services training mission in October 2000.

USAF photo by Scott H. Spitzer

AIR COMBAT COMMAND, LANGLEY AFB, VA.



EQUIPMENT

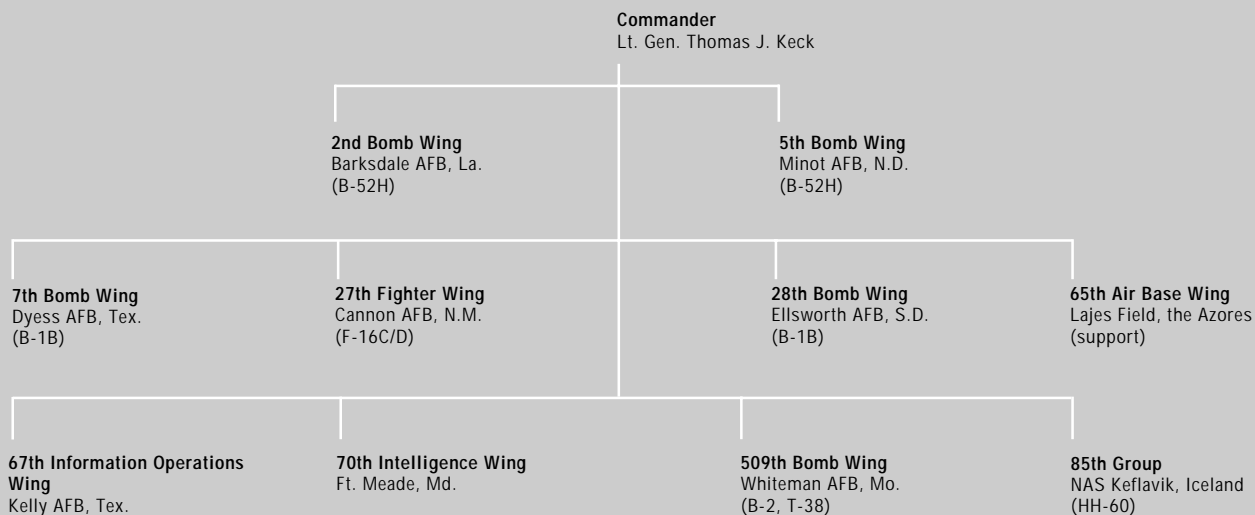
(Primary Aircraft Inventory as of Sept. 30, 2000)

Bombers (B-1B, B-2, B-52H)	125	Fighter/Attack (A/OA-10, F-15, F-16, F-117)	718	E-8, EC-130, OC-135, RC-135, RQ-1, U-2)	100
		Helicopter (HH-60)	29	Tanker (HC-130, KC-135R)	15
		Recon/BM/C ³ I (E-3, E-4,		Trainer (T-38, TC-135, TU-2)	40

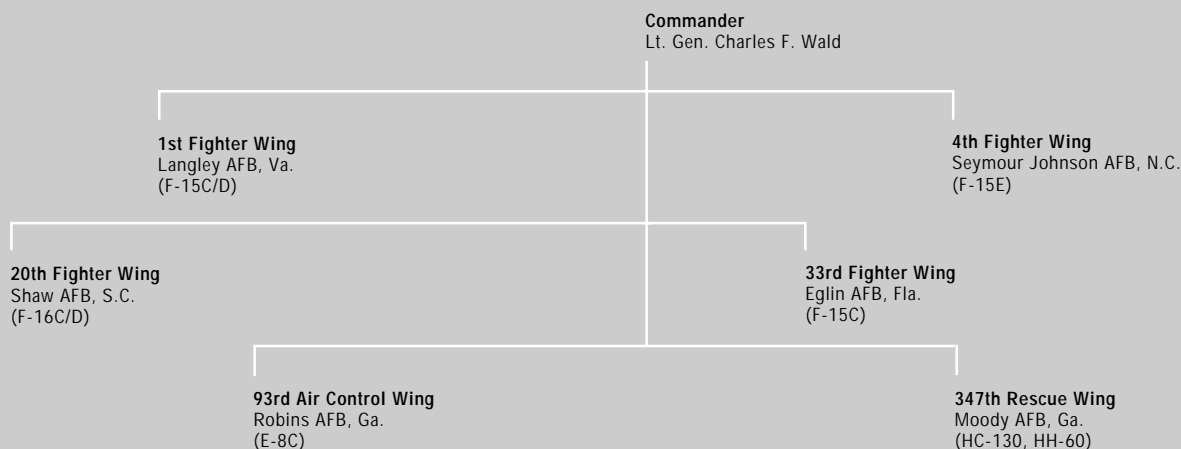
UNIT	BASE	WEAPONS
1st Fighter Wing	Langley AFB, Va.	F-15C/D
2nd Bomb Wing	Barksdale AFB, La.	B-52H
4th Fighter Wing	Seymour Johnson AFB, N.C.	F-15E
5th Bomb Wing	Minot AFB, N.D.	B-52H
7th Bomb Wing	Dyess AFB, Tex.	B-1B
9th Reconnaissance Wing	Beale AFB, Calif.	T-38, U-2
20th Fighter Wing	Shaw AFB, S.C.	F-16C/D
23rd Fighter Group	Pope AFB, N.C.	A/OA-10
27th Fighter Wing	Cannon AFB, N.M.	F-16C/D
28th Bomb Wing	Ellsworth AFB, S.D.	B-1B
33rd Fighter Wing	Eglin AFB, Fla.	F-15C
49th Fighter Wing	Holloman AFB, N.M.	AT-38B, F-117A, German F-4F
53rd Wing	Eglin AFB, Fla.	A-10, F-15A/C/E, F-16C/D, F-117, HH-60
53rd Weapons Evaluation Group*	Tyndall AFB, Fla.	BQM-34, MQM-107, QF-4
55th Wing	Offutt AFB, Neb.	E-4B, OC-135B, RC-135S/U/V/W, TC-135S/W, WC-135W
57th Wing	Nellis AFB, Nev.	A-10, F-15C/D/E, F-16, HH-60, RQ-1A
65th Air Base Wing	Lajes Field, the Azores (support)	—
67th Information Operations Wing	Kelly AFB, Tex.	—
70th Intelligence Wing	Ft. Meade, Md.	—
85th Group	NAS Keflavik, Iceland	HH-60
93rd Air Control Wing	Robins AFB, Ga.	E-8C
99th Air Base Wing	Nellis AFB, Nev. (support)	—
347th Rescue Wing	Moody AFB, Ga.	HC-130, HH-60
355th Wing	Davis–Monthan AFB, Ariz.	A/OA-10, EC-130E/H
366th Wing	Mountain Home AFB, Idaho	B-1B, F-15C/D/E, F-16C/D, KC-135R
388th Fighter Wing	Hill AFB, Utah	F-16C/D
509th Bomb Wing	Whiteman AFB, Mo.	B-2, T-38
552nd Air Control Wing	Tinker AFB, Okla.	E-3B/C

*Part of 53rd Wing.

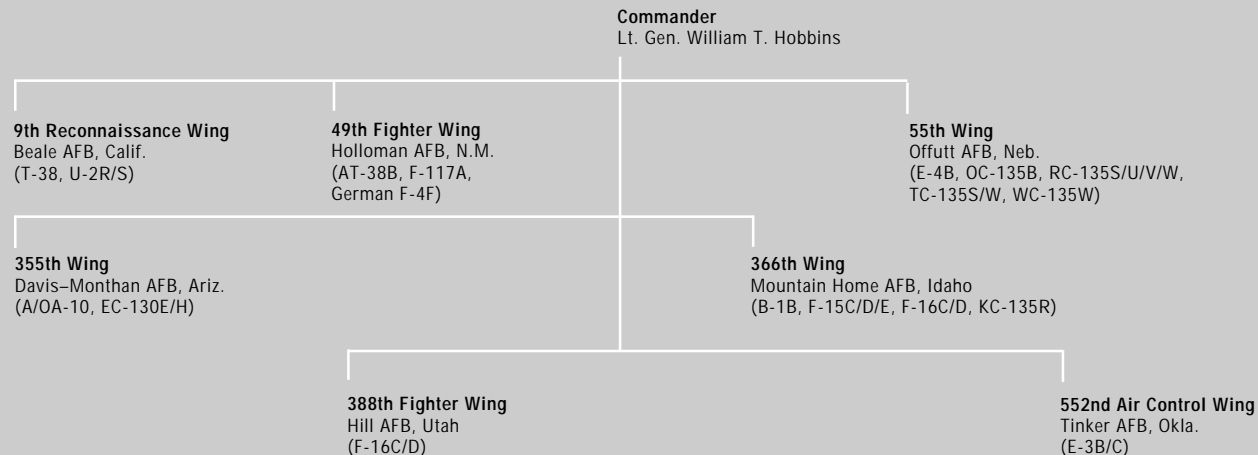
8th AIR FORCE (ACC), BARKSDALE AFB, LA.



9th AIR FORCE (ACC), SHAW AFB, S.C.



12th AIR FORCE (ACC), DAVIS-MONTHAN AFB, ARIZ.





An F-16CJ runs in full afterburner during a nighttime engine test at Shaw AFB, S.C. SrA. James Kennedy controls the test from the cockpit. At the rear of the aircraft, A1C Justin Cox (left) monitors operations, while SSgt. Bryan Gallo stands by with fire extinguishing equipment.

AETC

Air Education and Training Command

Headquarters Randolph AFB, Tex.

Established July 1, 1993

Commander Gen. Hal M. Hornburg

MISSIONS

Recruit, train, and educate quality people
Provide basic military training, initial and advanced technical training, flying training, and professional military and degree-granting professional education
Conduct joint, medical service, readiness, and Air Force security assistance training

OTHER RESPONSIBILITIES

Recall of Individual Ready Reservists. Mobility and contingency tasking support to combatant commanders

FORCE STRUCTURE

Two Numbered Air Forces and an educational headquarters: **2nd**, Keesler AFB, Miss.; **19th**, Randolph AFB, Tex.; **Air University**, Maxwell AFB, Ala.
Three DRUs: Air Force Recruiting Service and Air Force Security Assistance Training Squadron, Randolph AFB, Tex., and 59th Medical Wing, Lackland AFB, Tex.
16 wings

OPERATIONAL ACTIVITY

Flying hours: 43,397 per month



Photo by Paul Kennedy

Air Education and Training Command recruits airmen and—throughout their entire USAF careers—trains and educates them. For many, the process begins at Lackland AFB, Tex., where training instructors, like this one in the signature “Smokey Bear” hat, have only six weeks to turn raw recruits into professional airmen.

PERSONNEL

(as of Sept. 30, 2000)

Active duty		68,452
Officers	14,532	
Enlisted	53,920	
Reserve components		6,678
ANG	4,386	
AFRC	2,292	
Civilian		14,122
Total		89,252

EQUIPMENT

(PAI as of Sept. 30, 2000)

Fighter/Attack (F-15, F-16)	211
Helicopter (HH-60, TH-53, UH-1)	15
Special Operations Forces (H/MC-130, MH-53)	13
Tanker (KC-135)	24
Trainer (AT/T-38, T-1, T-3*, T-6, T-37, T-43)	950
Transport (C-5, C-12, C-17, C-21, C-130, C-141)	61

*T-3 no longer in use.

UNIT	BASE	WEAPONS
------	------	---------

Flying/Aircrew Training Units (Active)

12th Flying Training Wing	Randolph AFB, Tex.	AT/T-38, T-1, T-6, T-37, T-43
14th FTW	Columbus AFB, Miss.	T-1, T-37, T-38
45th Airlift Squadron	Keesler AFB, Miss.	C-21
47th FTW	Laughlin AFB, Tex.	T-1, T-37, T-38
56th Fighter Wing	Luke AFB, Ariz.	F-16
58th Special Operations Wing	Kirtland AFB, N.M.	H/MC-130P, MC-130H, HH-60G, MH-53J, TH-53A, UH-1
71st FTW	Vance AFB, Okla.	T-1, T-37, T-38
80th FTW	Sheppard AFB, Tex.	AT/T-38, T-37
97th Air Mobility Wing	Altus AFB, Okla.	C-5, C-17, C-141, KC-135
314th Airlift Wing	Little Rock AFB, Ark.	C-130
325th Fighter Wing	Tyndall AFB, Fla.	F-15, Undergraduate Controller and Air Battle Manager Training
336th Training Group	Fairchild AFB, Wash.	UH-1, Aircrew Survival Training
479th Flying Training Group	Moody AFB, Ga.	T-6, AT/T-38

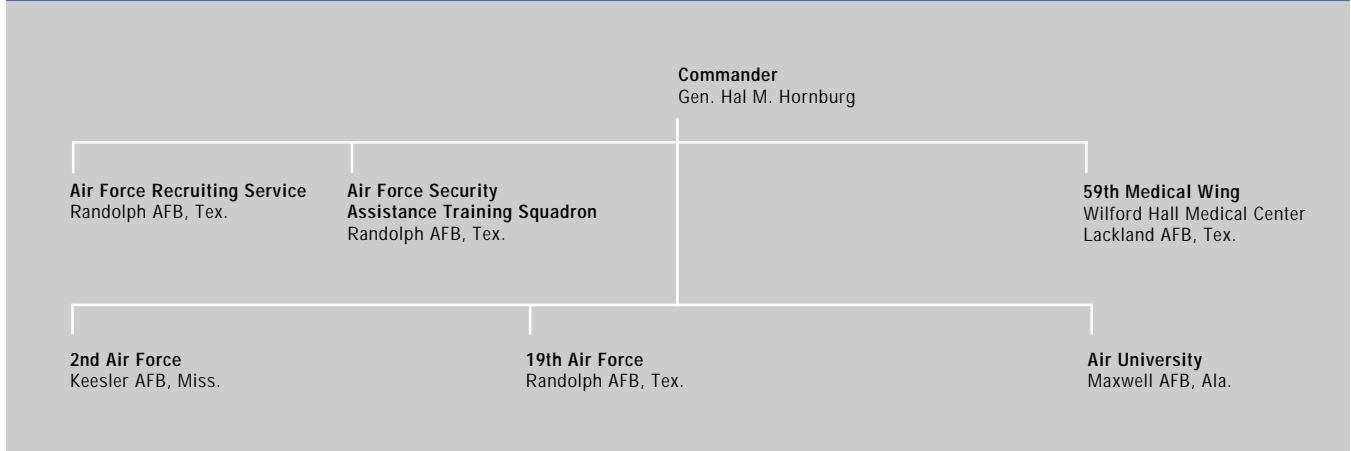
Technical Training Units

17th Training Wing	Goodfellow AFB, Tex.	
37th Training Wing	Lackland AFB, Tex.	
81st Training Wing	Keesler AFB, Miss.	
82nd Training Wing	Sheppard AFB, Tex.	
381st Training Group	Vandenberg AFB, Calif.	

Other Major Units

Air University	Maxwell AFB, Ala.	
Air Force Recruiting Service	Randolph AFB, Tex.	
42nd Air Base Wing	Maxwell AFB, Ala.	
59th Medical Wing	Lackland AFB, Tex.	

AIR EDUCATION AND TRAINING COMMAND, RANDOLPH AFB, TEX.

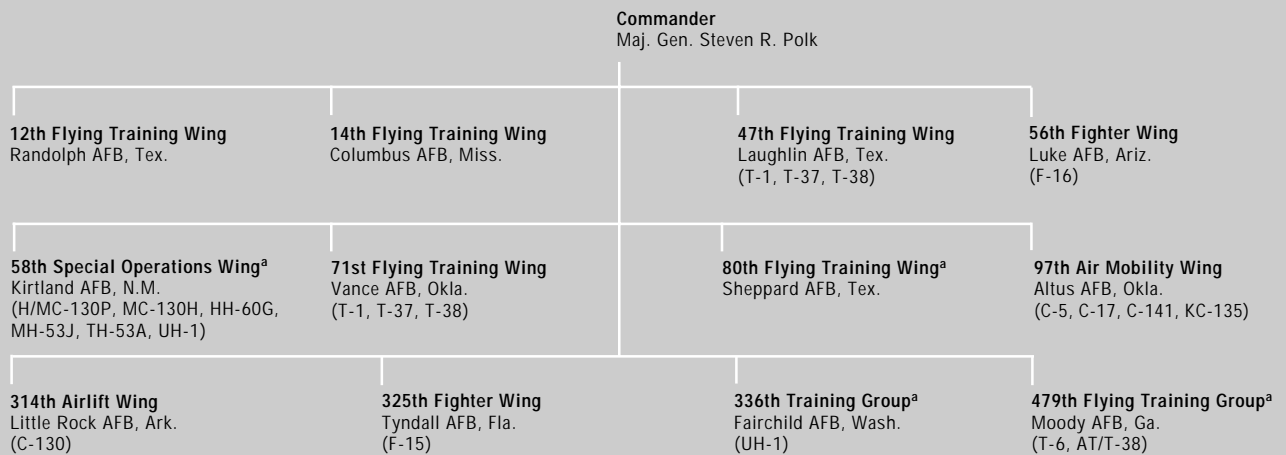


2nd AIR FORCE (AETC), KEESLER AFB, MISS.



^aTenant unit.

19th AIR FORCE (AETC), RANDOLPH AFB, TEX.



^aTenant unit.

AIR UNIVERSITY (AETC), MAXWELL AFB, ALA.



Air Force Materiel Command

Headquarters Wright-Patterson AFB, Ohio

Established July 1, 1992

Commander Gen. Lester L. Lyles

MISSIONS

Manage the integrated research, development, test, acquisition, and sustainment of weapon systems
 Produce and acquire advanced systems
 Operate major product centers, logistics centers, test centers, and the Air Force Research Laboratory

FORCE STRUCTURE

Four major product centers
 Two test centers
 Five air logistics centers
 Two specialized centers
 One laboratory

OPERATIONAL ACTIVITY

Flying hours: 1,800 per month

PERSONNEL

(as of Sept. 30, 2000)

Active duty		26,115
Officers	7,555	
Enlisted	18,560	
Reserve components		5,627
ANG	2,210	
AFRC	3,417	
Civilian		58,286
Total		90,028

EQUIPMENT

(PAI as of Sept. 30, 2000)		Recon/BM/C ³ I (EC-18, EC-135)	4
Bomber (B-1B, B-52)	3	Tanker (NKC/KC-135)	4
Fighter/Attack (A-10, F-15, F-16, F-22, F-117)	48	Trainer (AT/T-38, T-39)	16
Helicopter (HH-60, UH-1)	4	Transport (C-12, C-17, C-130, C-135, NC-130)	31

UNIT

BASE

Aeronautical Systems Center	Wright-Patterson AFB, Ohio
Air Armament Center	Eglin AFB, Fla.
Electronic Systems Center	Hanscom AFB, Mass.
Space and Missile Systems Center	Los Angeles AFB, Calif.
Air Force Flight Test Center	Edwards AFB, Calif.
Arnold Engineering Development Center	Arnold AFB, Tenn.
Ogden Air Logistics Center	Hill AFB, Utah
Oklahoma City Air Logistics Center	Tinker AFB, Okla.
Sacramento Air Logistics Center	McClellan AFB, Calif.
San Antonio Air Logistics Center	Kelly AFB, Tex.
Warner Robins Air Logistics Center	Robins AFB, Ga.
Aerospace Maintenance & Regeneration Center	Davis-Monthan AFB, Ariz.
Air Force Security Assistance Center	Wright-Patterson AFB, Ohio
311th Human Systems Wing	Brooks AFB, Tex.
Hq. Air Force Research Laboratory	Wright-Patterson AFB, Ohio

AIR FORCE MATERIEL COMMAND, WRIGHT-PATTERSON AFB, OHIO



Air Force Space Command

Headquarters Peterson AFB, Colo.
 Established Sept. 1, 1982
 Commander Gen. Ralph E. Eberhart

MISSIONS

Operate and test USAF ICBM forces for STRATCOM; missile warning radars, sensors, and satellites; national space-launch facilities and operational boosters; worldwide space surveillance radars and optical systems; worldwide space environmental systems
 Provide command and control for DOD satellites; ballistic missile warning to NORAD and SPACECOM; space weather support to entire DOD

COROLLARY MISSIONS

Develop and integrate space support for the warfighter
 Serve as lead command for all USAF UH-1 helicopter programs

OTHER RESPONSIBILITIES

Provide communications, computer, and base support to NORAD; technology safeguard monitors to support launches of US satellites on foreign launch vehicles
 Supply range and launch facilities for military, civil, and commercial space launch

FORCE STRUCTURE

Two Numbered Air Forces: **14th**, Vandenberg AFB, Calif.; **20th**, F.E. Warren AFB, Wyo.
 One DRU: Space Warfare Center, Schriever AFB, Colo.
 Seven space wings
 One space group

PERSONNEL

(as of Sept. 30, 2000)

Active duty		17,347
Officers	3,655	
Enlisted	13,692	
Reserve components		1,010
ANG	367	
AFRC	643	
Civilian		4,350
Total		22,707

EQUIPMENT

(as of Sept. 30, 2000)

Ballistic missile warning systems: Defense Support Program satellites, Ballistic Missile Early Warning System, Pave Paws radars, Perimeter Acquisition Radar Attack Characterization System, conventional radars

Boosters: Delta II, Atlas II, Titan II, Titan IV

Helicopters: 18

ICBMs:

 Peacekeeper: 50
 Minuteman III: 500

Satellite command-and-control system:

Air Force Satellite Control Network (worldwide system of eight tracking stations providing communications links to satellites to monitor their status)

Satellite systems

(as of Jan. 1, 2001):

 GPS: Block II/IIA/IIR: 27
 DMSP: 2
 DSCS III: 10
 Milstar: 2
 Milsatcom Polar System: 1

Space surveillance systems:

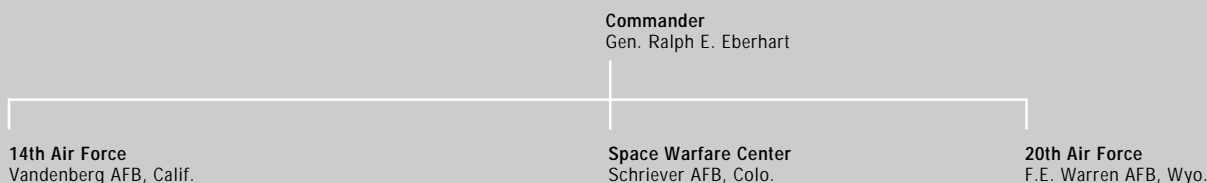
Electro-Optical Deep Space Surveillance System, phased-array radars, mechanical tracking radars, passive surveillance radars

A Titan IVB lifts off from Vandenberg AFB, Calif., to carry a satellite into orbit.

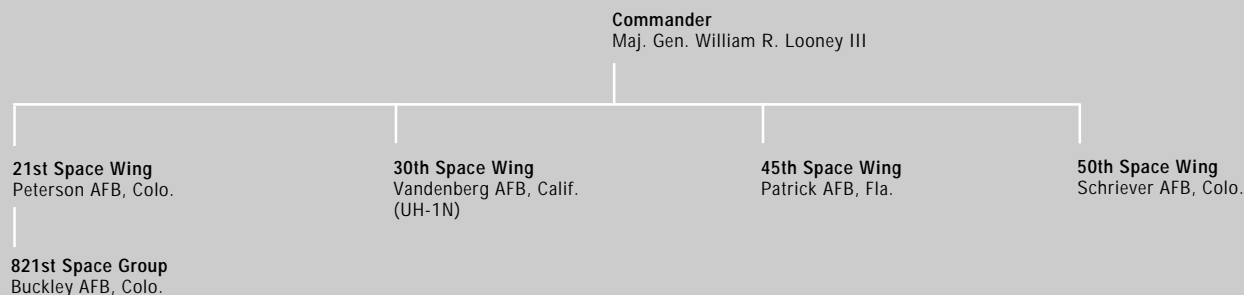


USAF photo by SSGT Pamela Taubman

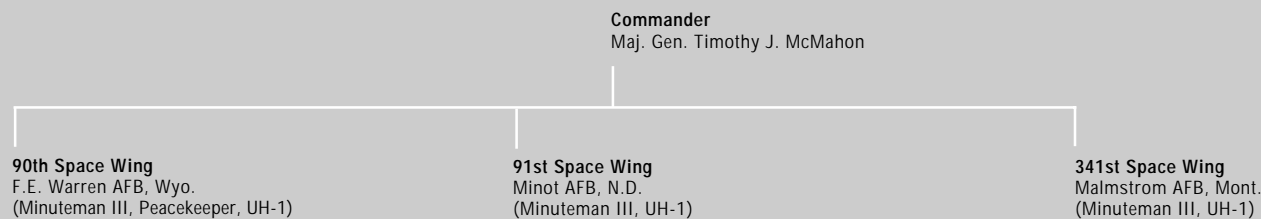
AIR FORCE SPACE COMMAND, PETERSON AFB, COLO.



14th AIR FORCE (AFSPC), VANDENBERG AFB, CALIF.



20th AIR FORCE (AFSPC), F.E. WARREN AFB, WYO.



UNIT	BASE	WEAPONS/ACTIVITIES
21st Space Wing	Peterson AFB, Colo.	Missile warning and space surveillance
30th Space Wing	Vandenberg AFB, Calif.	Polar-orbiting launches, launch R&D tests, range operations for DOD, NASA, ballistic missile and aeronautical systems, and commercial launches; test support for DOD space and ICBM systems; UH-1, Delta II, Atlas IIAS, Titan II, Titan IV, Pegasus, Taurus
45th Space Wing	Patrick AFB, Fla.	Launch, range operations for DOD, NASA, and commercial space launches; shuttle program support and US Navy Trident test support; Delta II, Atlas II, Titan IV
50th Space Wing	Schriever AFB, Colo.	Command and control of DOD and allied nations' satellites
90th Space Wing	F.E. Warren AFB, Wyo.	Minuteman III and Peacekeeper ICBMs, UH-1
91st Space Wing	Minot AFB, N.D.	Minuteman III ICBM, UH-1
341st Space Wing	Malmstrom AFB, Mont.	Minuteman III ICBM, UH-1
821st Space Group	Buckley AFB, Colo.	Missile warning and space communications

Air Force Special Operations Command

Headquarters Hurlburt Field, Fla.
 Established May 22, 1990
 Commander Lt. Gen. Maxwell C. Bailey

MISSIONS

Serve as the Air Force component of SOCOM
 Deploy specialized airpower, delivering special operations combat power anywhere, anytime
 Provide Air Force Special Operations Forces for worldwide deploy-

ment and assignment to regional unified commands to conduct unconventional warfare, direct action, special reconnaissance, counterterrorism, foreign internal defense, counterproliferation, civil affairs, humanitarian assistance, psychological operations, personnel recov-

ery, and counternarcotics operations

FORCE STRUCTURE

One active duty, one ANG, and one AFRC special operations wings
 Three groups (two special opera-

Special Operations MH-53 helicopters from Osan AB, South Korea, sit on the flight line at Taegu, South Korea, during an exercise last fall.



USAF photo by TSgt. Cary Humphries

tions, one special tactics)
USAF Special Operations School

OPERATIONAL ACTIVITY
Flying hours: 4,350 per month

PERSONNEL

(as of Sept. 30, 2000)

Active duty		8,965
Officers	1,448	
Enlisted	7,517	
Reserve components		2,451
ANG	1,190	
AFRC	1,261	
Civilian		585
Total		12,001

EQUIPMENT

(PAI as of Sept. 30, 2000)

Helicopter (UH-1)	2
Recon/BM/C ³ I (EC-137)	1
SOF (AC/130, MC-130, MH-53, MH-60)	79

UNIT	BASE	WEAPONS
16th Special Operations Wing	Hurlburt Field, Fla.	AC-130H/U, EC-137D, MC-130E/H, MC-130P (Eglin AFB, Fla.), MH-53J/M, UH-1
18th Flight Test Squadron	Hurlburt Field, Fla.	—
352nd Special Operations Group	RAF Mildenhall, UK	MC-130H, MC-130P, MH-53J/M
353rd Special Operations Group	Kadena AB, Japan	MC-130H/P, MH-53J (Osan AB, South Korea)
720th Special Tactics Group	Hurlburt Field, Fla.	—
USAF Special Operations School	Hurlburt Field, Fla.	—

AIR FORCE SPECIAL OPERATIONS COMMAND, HURLBURT FIELD, FLA.



Air Mobility Command

Headquarters Scott AFB, Ill.

Established June 1, 1992

Commander Gen. Charles T. Robertson Jr.

MISSIONS

Provide rapid global mobility and sustainment through tactical and strategic airlift and aerial refueling for US armed forces

COROLLARY MISSIONS

Provide special duty and operational support aircraft and global humanitarian support
Perform peacetime and wartime aeromedical evacuation missions

FORCE STRUCTURE

Two Numbered Air Forces: **15th**, Travis AFB, Calif.; **21st**, McGuire AFB, N.J.

Three DRUs: Air Mobility Warfare Center, Ft. Dix, N.J.; Tanker Airlift Control Center, Scott AFB, Ill.; Defense Courier Service, Ft. Meade, Md.

12 wings (six airlift, two air mobility, four air refueling)

Three groups (two airlift, one air refueling)

OPERATIONAL ACTIVITY

Flying hours: 27,000+ per month

Major operations

Able Sentry, Sabre (Macedonia); Allied Force, Joint Guardian, Shining Hope (Yugoslavia); Avid Response (earthquake relief, Turkey); Deep Freeze (Arctic/Antarctic); Deliberate/Joint Forge (Bosnia); Hurricane Mitch (Honduras and Nicaragua); Laser Strike (Latin

America); Northern/Southern Watch (Iraq); Phoenix Banner (Europe, New Zealand, Mediterranean); Safe Border (Ecuador and Peru); Stabilise (East Timor); Taiwan earthquake support

Major training exercises

African Crisis Response Initiative; Amalgam Warrior (NORAD); Atlas Drop, Bright Star, Eastern Castle (CENTCOM); Cobra Gold, Tandem Thrust, Team Spirit, Purple Dragon (PACOM); New Horizons (Dominican Republic, Haiti, St. Lucia)

PERSONNEL

(as of Sept. 30, 2000)

Active duty	49,930
Officers	8,562
Enlisted	41,368
Reserve components	81,132
ANG	37,076
AFRC	44,056
Civilian	7,798
Total	138,860



USAF photo by TSgt. Cary Humphries

At Pope AFB, N.C., Army troops on their way to help fight forest fires last summer board a C-17 from McChord AFB, Wash. At left, a truck intended for an earthquake relief effort in India in February is unloaded from a C-5 out of Dover AFB, Del.

EQUIPMENT

(PAI as of Sept. 30, 2000)

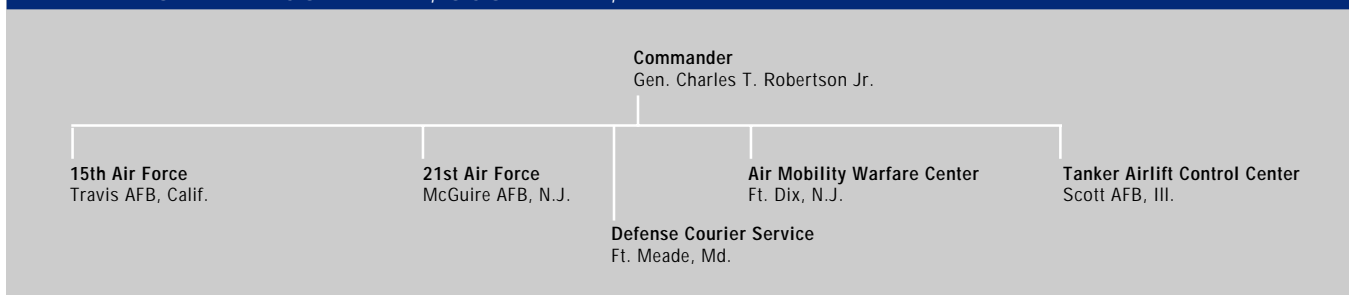
Helicopter (UH-1)	15
Tanker (KC-10, KC-135)	222
Trainer (CT-43)	1
Transport (C-5, C-9, C-17, C-20, C-21, C-32, C-37, C-130, C-137, C-141, VC-25)	325

USAF photo by SSgt. Sian Parker



UNIT	BASE	WEAPONS
6th Air Refueling Wing	MacDill AFB, Fla.	KC-135
19th Air Refueling Group	Robins AFB, Ga.	KC-135
22nd Air Refueling Wing	McConnell AFB, Kan.	KC-135
43rd Airlift Wing	Pope AFB, N.C.	C-130
60th Air Mobility Wing	Travis AFB, Calif.	C-5, KC-10
62nd Airlift Wing	McChord AFB, Wash.	C-17, C-141
89th Airlift Wing	Andrews AFB, Md.	C-9, C-20, C-32, C-37, C-137, VC-25, UH-1
92nd Air Refueling Wing	Fairchild AFB, Wash.	KC-135
305th Air Mobility Wing	McGuire AFB, N.J.	C-141, KC-10
317th Airlift Group	Dyess AFB, Tex.	C-130
319th Air Refueling Wing	Grand Forks AFB, N.D.	KC-135
375th Airlift Wing	Scott AFB, Ill.	C-9, C-21
436th Airlift Wing	Dover AFB, Del.	C-5
437th Airlift Wing	Charleston AFB, S.C.	C-17
463rd Airlift Group	Little Rock AFB, Ark.	C-130

AIR MOBILITY COMMAND, SCOTT AFB, ILL.



15th AIR FORCE (AMC), TRAVIS AFB, CALIF.



21st AIR FORCE (AMC), MCGUIRE AFB, N.J.



^aTenant unit.

PACAF

Pacific Air Forces

Headquarters Hickam AFB, Hawaii

Established July 1, 1957

Commander Lt. Gen. Lansford E. Trapp (acting)

MISSIONS

Plan, conduct, and coordinate offensive and defensive air operations in the Asian and Pacific theaters
Organize, train, equip, and maintain resources to conduct air operations

FORCE STRUCTURE

Four Numbered Air Forces: **5th**, Yokota AB, Japan; **7th**, Osan AB, South Korea; **11th**, Elmendorf AFB, Alaska; **13th**, Andersen AFB, Guam
Nine wings (two multimission, four fighter, one airlift, two air base)

OPERATIONAL ACTIVITY

Flying hours: 10,109 per month

Major training exercises

Cobra Gold (Thailand), Commando Sling (Singapore), Cope North (Japan), Cope Thunder (Alaska), Cope Tiger (Thailand), Foal Eagle (South Korea), Positive Force (Pacific), Reception Staging Onward Movement and Integration (South Korea), Tandem Thrust (Guam, No. Marianas), Ulchi Focus Lens (South Korea)



USAF photo by SSgt. Jerry Morrison

F-16s from the 8th Fighter Wing, Kunsan AB, South Korea, are among PACAF assets located around the Pacific, from Alaska to South Korea.

PERSONNEL

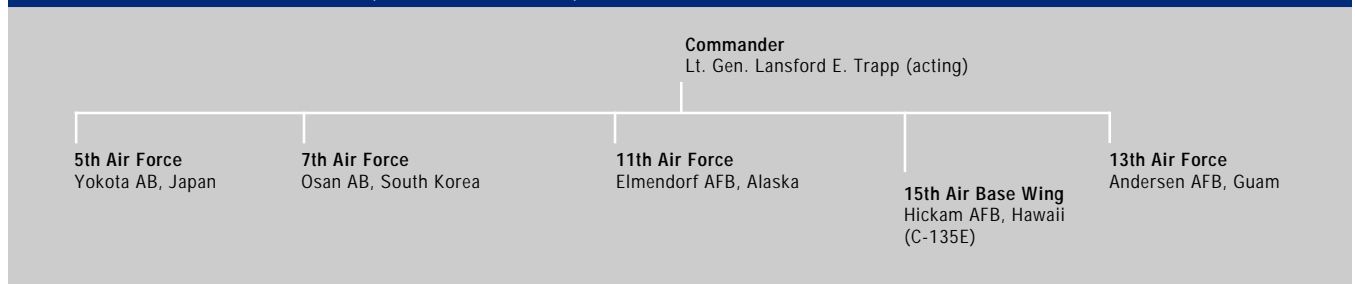
(as of Sept. 30, 2000)

Active duty	32,019
Officers	4,065
Enlisted	27,954

Reserve components	4,485
ANG	4,144
AFRC	341
Civilian	8,358
Total	44,862

UNIT	BASE	WEAPONS
3rd Wing	Elmendorf AFB, Alaska	C-12, C-130H, E-3B/C, F-15C/D, F-15E
8th Fighter Wing	Kunsan AB, South Korea	F-16C/D
15th Air Base Wing	Hickam AFB, Hawaii	C-135E
18th Wing	Kadena AB, Japan	E-3B/C, F-15C/D, KC-135R, HH-60G
35th Fighter Wing	Misawa AB, Japan	F-16C/D
36th Air Base Wing	Andersen AFB, Guam	—
51st Fighter Wing	Osan AB, South Korea	A/OA-10A, C-12, F-16C/D
354th Fighter Wing	Eielson AFB, Alaska	A/OA-10A, F-16C/D
374th Airlift Wing	Yokota AB, Japan	C-9A, C-21A, C-130E/H, UH-1N

PACIFIC AIR FORCES, HICKAM AFB, HAWAII



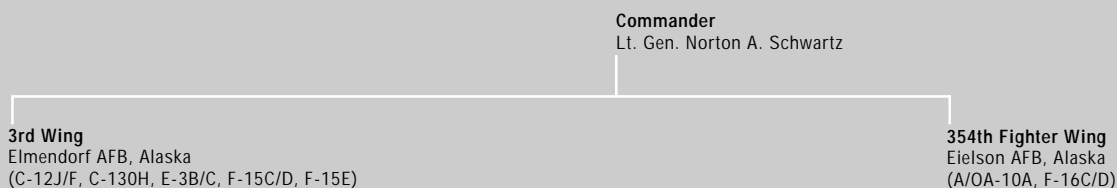
5th AIR FORCE (PACAF), YOKOTA AB, JAPAN



7th AIR FORCE (PACAF), OSAN AB, SOUTH KOREA



11th AIR FORCE (PACAF), ELMENDORF AFB, ALASKA



EQUIPMENT

(PAI as of Sept. 30, 2000)

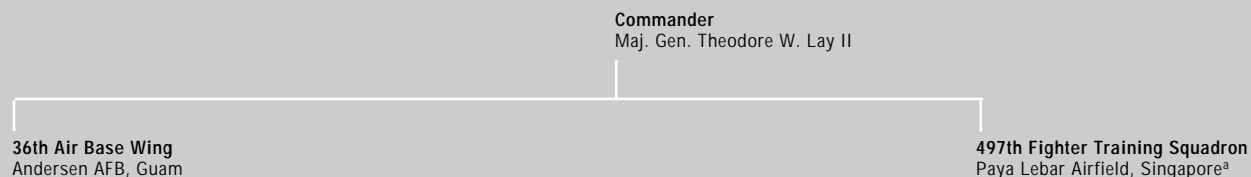
Fighter/Attack (A/OA-10, F-15, F-16)	270
Helicopter (UH-1, HH-60)	11
Recon/BM/C ³ I (E-3)	3
Tanker (KC-135)	15
Transport (C-9, C-12, C-21, C-130, C-135)	40

SSgt. Jason Day, a communications technician, repairs a radio while on deployment to support Operation Northern Watch. Day is from the 962nd Airborne Air Control Squadron at Elmendorf AFB, Alaska.



USAF photo by SrA. Matthew Hammen

13th AIR FORCE (PACAF), ANDERSEN AFB, GUAM



^aBase owned by Singapore government.

USAFE

US Air Forces in Europe

Headquarters Ramstein AB, Germany

Established Aug. 7, 1945

Commander Gen. Gregory S. Martin

MISSIONS

Provide the joint force commander rapidly deployable expeditionary aerospace forces

COROLLARY MISSIONS

Plan, conduct, coordinate, and support aerospace operations to achieve US national and NATO objectives based on EUCOM taskings Develop and maintain light, lean, lethal, and rapid expeditionary aerospace forces

Establish and maintain expeditionary bases

Support US military plans and operations in Europe, the Mediterranean, the Middle East, and Africa

FORCE STRUCTURE

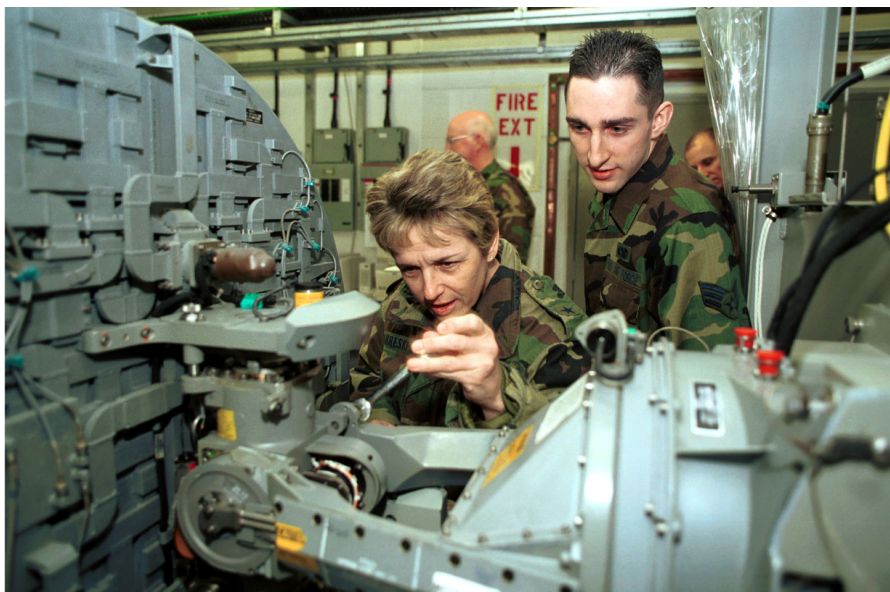
Two Numbered Air Forces: **3rd**, RAF Mildenhall, UK; **16th**, Aviano AB, Italy Six wings (one multimission, one air refueling, one airlift, and three fighter)

OPERATIONAL ACTIVITY

Flying hours: 6,932 per month

Major operations

Allied Force, Joint Guardian, Shining Hope (Yugoslavia); Joint Forge (Bosnia); Northern Watch (Iraq)



USAF photo by SSgt. William Greer

At RAF Lakenheath, UK, Brig. Gen. Terry Gabreski, USAF director of maintenance, performs an antenna boresight alignment as SrA. Greg Fedorick, from the 48th Component Repair Squadron's Avionics Flight, observes.

US AIR FORCES IN EUROPE, RAMSTEIN AB, GERMANY

Commander
Gen. Gregory S. Martin

3rd Air Force
RAF Mildenhall, UK
Maj. Gen. Kenneth W. Hess

16th Air Force
Aviano AB, Italy
Lt. Gen. Ronald E. Keys

The USAFE organizational chart above shows peacetime lines of command. The chart below shows the NATO wartime command lines of authority.

Allied Command Europe (ACE)

Allied Forces Southern Europe (AFSOUTH)
Naples, Italy

Allied Forces Central Europe (AFCENT)
Brunssum, Netherlands

Allied Forces Northwest Europe (AFNORTHWEST)
High Wycombe, UK

Allied Air Forces Southern Europe (AIRSOUTH)
Naples, Italy

Allied Air Forces Central Europe (AIRCENT)
Ramstein AB, Germany

Allied Air Forces Northwest Europe (AIRNORTHWEST)
High Wycombe, UK

5th Combined Air Operations Center
Vicenza, Italy

6th Combined Air Operations Center
Eskisehir, Turkey

Major training exercises

African Eagle, Atlas Drop, Baltops, Clean Hunter, Combined Endeavor, Cooperative Banner/Chance/Key, Cornerstone, Dynamic Mix, Humro, Juniper Stallion, Matador, Medceur, Medflag, Tactical Fighter Weaponry, Trailblazer, Union Flash

PERSONNEL

(as of Sept. 30, 2000)

Active duty	25,724
Officers	3,384
Enlisted	22,340
Reserve components	237
ANG	68
AFRC	169
Civilian	4,864
Total	30,825

EQUIPMENT

(PAI as of Sept. 30, 2000)

Fighter/Attack (A/OA-10, F-15, F-16)	167
Tanker (KC-135)	15
Transport (C-9, C-20, C-21, C-130)	36

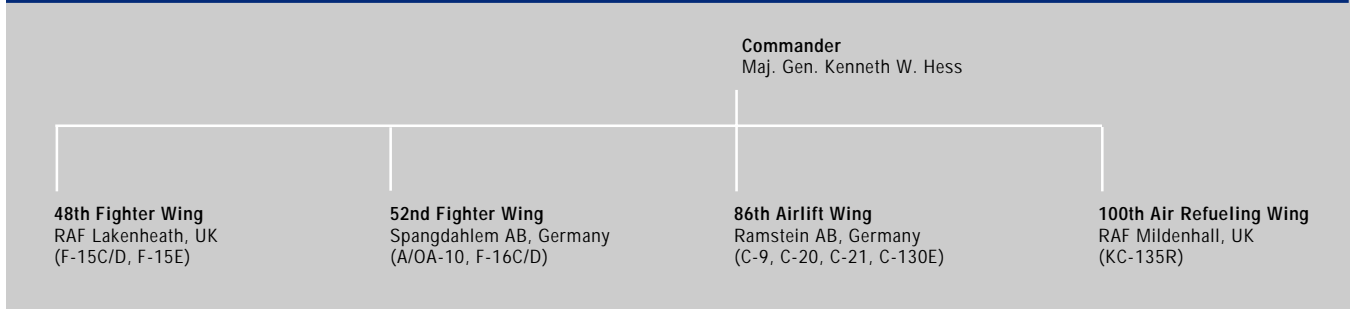


USAF photo by SSGT Jennifer C. Wallis

At Aviano AB, Italy, SSgt. Rick Sapone (left) and 2nd Lt. Adam Cuquet (middle), from the 31st Fighter Wing, listen to instructions from Italian air force Lt. Dario de Liguorno. The trio was taking part in a NATO search and rescue exercise in Rimini, Italy, in February.

UNIT	BASE	WEAPONS
31st Fighter Wing	Aviano AB, Italy	F-16C/D
39th Wing	Incirlik AB, Turkey	(Tactical range and contingency support, rotational aircraft)
48th Fighter Wing	RAF Lakenheath, UK	F-15C/D, F-15E
52nd Fighter Wing	Spangdahlem AB, Germany	A/OA-10, F-16C/D
86th Airlift Wing	Ramstein AB, Germany	C-9, C-20, C-21, C-130E
100th Air Refueling Wing	RAF Mildenhall, UK	KC-135R

3rd AIR FORCE (USAFE), RAF MILDENHALL, UK



16th AIR FORCE (USAFE), AVIANO AB, ITALY

